

From Charcoal to Steel

A look at Architect Brad Cloepfil's design process



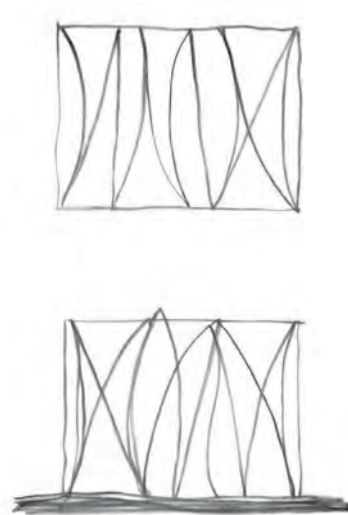
Section Concept, 2009. Pastel and charcoal on vellum. 34.5 x 24 in. Brad Cloepfil.

Brad Cloepfil's design process often begins with sketches, where he finds inspiration for many projects. In this sketch, Cloepfil explores the concept of vessels at play throughout the building.



Concept Model no. 01, 2009. Modeling concrete, salvaged brass instruments, oak base. 7 x 6 x 4.5 in. Allied Works Architecture.

This concept model was created during the building's early design phase, featuring smooth concrete geometric forms cast around salvaged pieces of different brass musical instruments. The form speaks to the sheer variety of musical expression, the diversity of spaces the building houses, as well as the landscape of Western Canada.



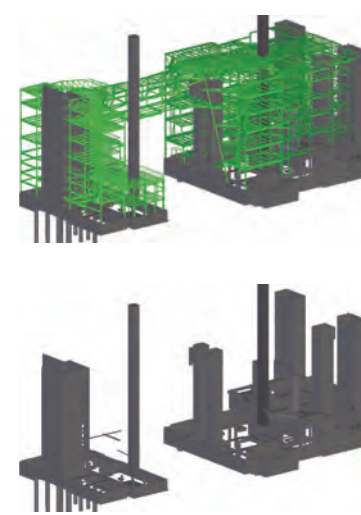
Building Concepts nos. 01-03, 2010. Charcoal on vellum. 36 x 18 in. Brad Cloepfil.

In this series of charcoal sketches, Cloepfil explores the interstitial spaces between Studio Bell's nine interlocking towers.



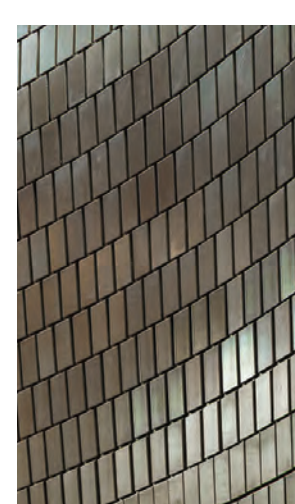
Concept Model no. 2, 2011. Hornbeam laminate, rare earth magnets. 19.5 x 8 x 6 in. Allied Works Architecture.

This interlocking concept model, made from layers of Hornbeam laminate, refines and resolves the spatial relationships explored in the previous series of conceptual studies.



Studio Bell structural steel sequence. Computer generated 3D model. Walters Inc.

Using cutting-edge 3D modeling technology, including Building Information Modeling (BIM) and parametric design, Allied Works determines the steel structure's potential.



Glazed terra cotta tiles. Photo: Bittermann Photography.

Allied Works' buildings are united by an attention to detail and intimate viewing experience. This is exemplified in Allied Work's collaboration with internationally renowned ceramics producers Tichelaar Makkum, a centuries old Dutch family firm, who created the 220,000 terra cotta tiles for Studio Bell.

Architect's Statement

"Studio Bell is a gathering of resonant vessels that stand as sentinels to Calgary's East Village. The building is a silent and powerful instrument that exists to emanate music and light. Nine towers form the body of the building; the walls, clad in terra cotta, rise in subtle curves that merge, part, and intertwine, modeled by light, gravity, and acoustics.

Entering from the street, the building is filled with the reverberation of voices and music, drawing visitors up into five floors of performance, exhibit, and collections spaces. The apertures at each gallery create a threshold of sound, introducing the content and programs of the particular exhibition. The spaces between are filled with silence, with views that frame the city and landscape beyond. Bridging across the street and back again, the building creates a gateway for the new quarter, uniting the artists' residences, club, and recording studios with the new presentation spaces.



Brad Cloepfil. Credit: Adrian Gaut.

The building binds audience and performer, student and teacher, the body and the collection. It is an immersion in sound and structure, a continuously enfolding space that creates a perpetual between."

Brad Cloepfil
Principal
Allied Works Architecture

Project Description

Designed by Allied Works Architecture, Studio Bell brings Canada's rich musical history to life through live performances, exhibitions, interactive education programs, and artist residencies. At once a performance hall, recording facility, broadcast studio, live music venue, and museum, Studio Bell is the first facility of its kind in North America.

Rising in nine subtly curved and interlocking towers, and clad in glazed terra cotta, the 160,000 square foot building references acoustic vessels, while providing sweeping views of the Bow River and surrounding cityscape. The complex also incorporates and revitalizes the historic King Edward Hotel, one of Calgary's oldest buildings and a legendary blues club.

NMC Leadership

Andrew Mosker, President and CEO
Rob Braide, Chair, NMC Board of Directors
Charlie Fischer, former NMC Board Member and Chair, Building Committee

AWA Project Team

Brad Cloepfil, Principal and Lead Designer
Kyle Lommen, Principal in Charge
Chelsea Grassinger, Project Manager
Daniel Richmond, Dan Koch, Project Architects
Kyle Caldwell, Paul Bickell, Brock Hinze, Bjorn Nelson, Philip Balsinger

Building Partners

Kasian Architecture, Calgary – Associate Architect
CANA Construction, Calgary – General Contractor
Haley Sharpe Design – Exhibition Design
Fisher Dachs Associates – Theater Design
RJC, Structural Engineering
SMP, Electrical Engineering
Stantec, Mechanical Engineering
JaffeHolden, Acoustics & A/V Design
Royal Tichelaar Makkum
St. Joseph Media – Exhibition Content Design
Pilchner Schoustal International Inc. – Recording Studio Design

Fact Sheet:

Studio Bell, home of the National Music Centre

Location

850 4 Street SE, Calgary, Alberta (East Block)
300–851 4 Street SE, Calgary, Alberta (West Block)

Space Breakdown

- Five stories across nine interlocking towers
- 160,000-square-feet of new construction, total
- 22,000-square-feet of exhibition galleries
- 4,000-square-foot, 300-seat performance hall

Features and Amenities

- 22 exhibition galleries across 5 floors
- A 300-seat performance hall
- NMC's collection and workshops
- Reception areas and event spaces
- State-of-the-art recording facilities
- Media centre and boardrooms
- Classrooms for education programs
- The King Eddy live music venue
- The Rolling Stones Mobile Studio
- CKUA Radio's broadcast studio
- NMC Gift Shop & Café

Building Materials

Custom glazed terra cotta cladding, steel and concrete structure

Media Contacts

For Studio Bell:
marketing@nmc.ca

For Allied Works:
press@alliedworks.com

Photo Credits

Bittermann Photography
Allied Works Architecture

About Allied Works Architecture

Allied Works was established to engage artists, builders, and thinkers in a collective pursuit of new expression. We are a community of makers, friends, peers that share a passion for design, and equally, the advancement of our social and environmental well-being. We are united by an ethic of boundless curiosity and uncommon commitment to creating beautiful, moving, and meaningful work.

which emerges from unique perspectives and diverse creative thinking, and can only thrive in an environment where all voices are welcomed.

Brad Cloepfil founded Allied Works in 1994 in Portland, Oregon. Since 2000, the practice has grown steadily through the completion of major museum projects, innovative educational facilities, residences and workplaces of diverse scale, purpose and character.

Learn more: alliedworks.com

Studio Bell is Targeted LEED Silver Certified

Architectural Overview

